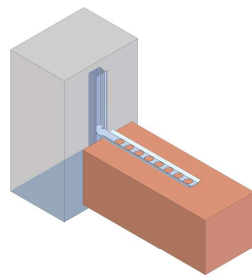


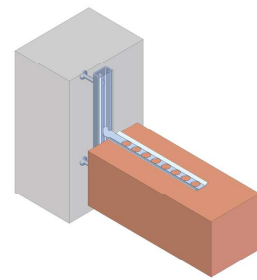
HMP Brickwork Restraint Channels - Product Details

Brickwork restraint channels and suitable ties are used in combination for restraining outer skin brickwork walls. This system ensures the durable and reliable connection of the brickwork wall easily and efficiently. The wall ties can be positioned anywhere along the length of the channel. Fixing is done by inserting the wall ties in to the slot of the channel and then turning them 90 degrees to effectively locking the wall tie in to the channel. There are different types of channels available that can be cast in and also surface mounted.

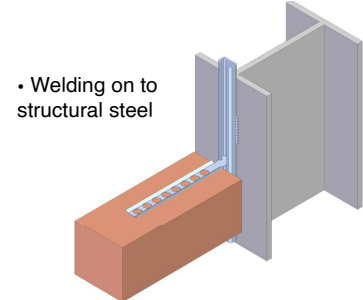
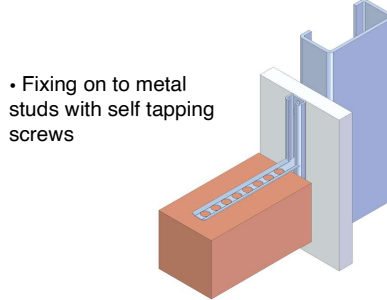
HMPR-25/15 & 28/28 Insert



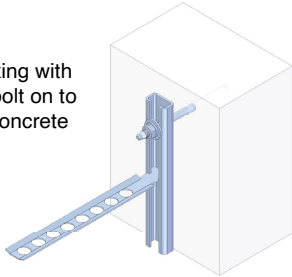
HMPR-28/15 & 38/17 Anchor Channel



HMP-28/15 & 38/17 & 25/14 C Channels







• Surface fixing with expansion bolt on to reinforced concrete walls



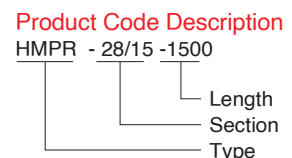
• Fixing on to metal studs with self tapping screws

• Welding on to structural steel

Product Code		Technical Details		
		Section Size (mm)	Allowable Pull Out Load At A Distance Of 250 Mm all F (kN)	Wall Tie Type
<p>MAAS-25/15 & HMP-28/28</p>  <p>HMPR-28/15 & HMPR-38/17</p> 	MASS-25/15 & HMP-28/28 Concrete insert	25/15 & 28/28	1.2	HWT-M-28 & HWT-28
	HMPR-28/15 Anchor Channel	28/15	3.0	
	HMPB-28/15 Surface Channel	28/15	3.0	
<p>HMPB-38/17</p> 	HMPR-38/17 Anchor Channel	38/17	4.5	HWT-M-38
	HMPB-38/17 Surface mount channel	38/17	4.5	
<p>HMPB-25/14</p> 	HMPB-25/14 Surface mount channel	25/14	1.2	HWT-25

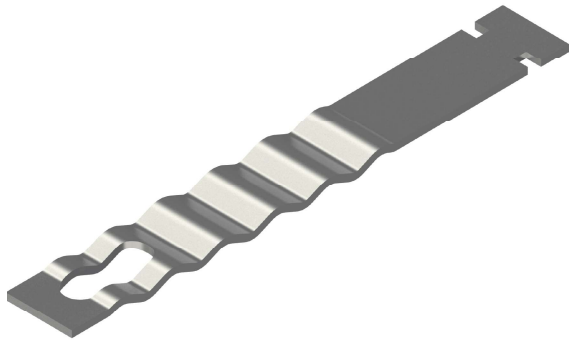
HMP Brickwork Wall Tie Channels

Wall Tie Channels are supplied in 3 and 6 metre lengths as standard. Special lengths can be cut according to project requirements. Channels are available in stainless steel and galvanized steel.



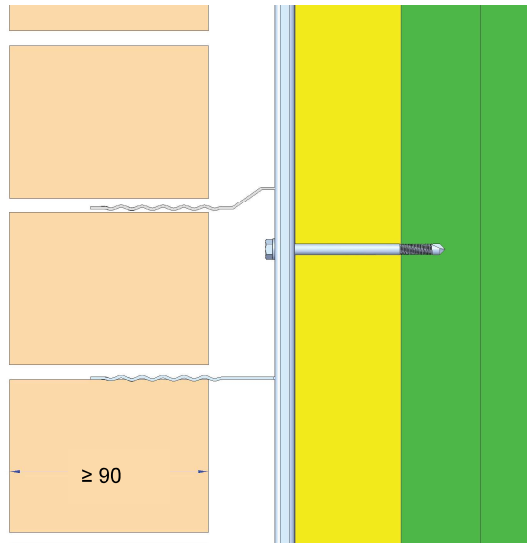
CWMT Brickwork Corrugated Wall Tie

CWMT-D Brickwork Wall Tie

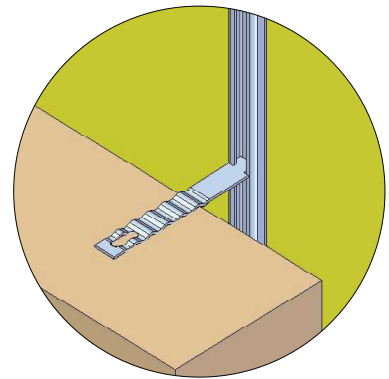
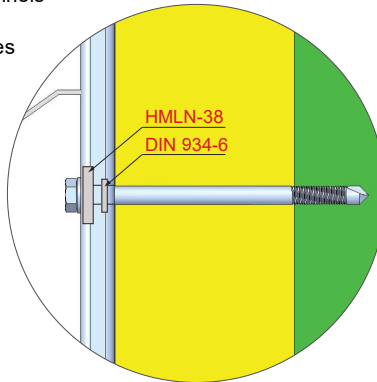


- Corrugated tie provides multiple drips to prevent moisture bridging cavity
- Provides lateral restraint for wind pressure & suction on brick work without transferring loads on to insulation
- Fixed on to 38/17 cast-in or surface fixed channels
- Positioning any where along the length of the channels
- Available in lengths between 75 and 250 mm
- Tensile loading is 0.7 kN per 600 mm screw centres

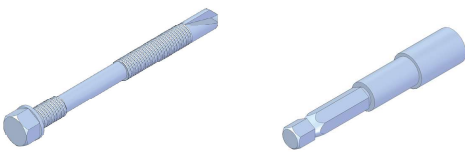
CWMT-D wall ties fixed on surface mounted C channels



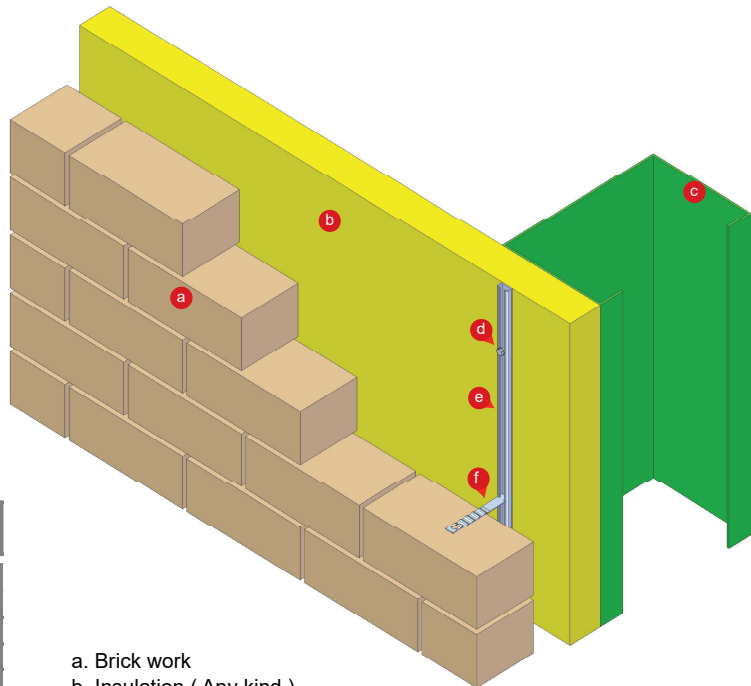
Product Code	Length
CMWT-D-75	75
CMWT-D-100	100
CMWT-D-125	125
CMWT-D-150	150
CMWT-D-200	200
CMWT-D-225	225
CMWT-D-250	250



HJT Self Tabbing Screw



- Self tapping screws with drill adaptor used for quick and easy fixing of surface channels on to metal studs

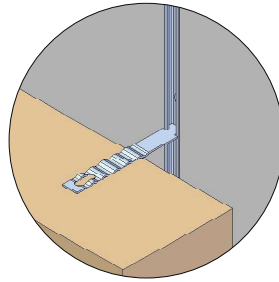
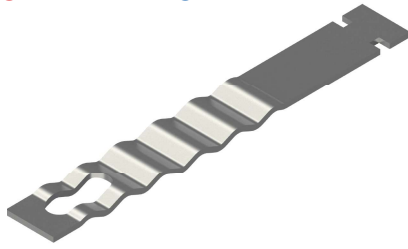


- a. Brick work
- b. Insulation (Any kind)
- c. Steel section
- d. HJT Self tabbing screws
- e. HMPD-38/17 Surface channel
- f. CWMT-D Corrugated wall tie

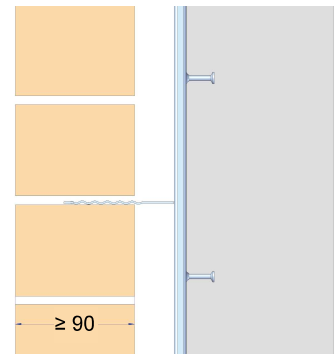
Product Code	Dimensions	Description	Insulation Thickness
For steel sections 1.5-6 mm thickness			
HJT-3-70	5.5x70	Un-washed	20-50
HJT-3-90	5.5x90		40-70
HJT-3-110	5.5x110		60-90
HJT3-130	5.5x130		80-110
For steel sections 1.5-6 mm thickness			
HJT2-120	6x120	Washed	55-105
HJT2-140	6x140		75-125
HJT2-160	6x160		95-145

CWMT Restraining Ties & Brackets - Product Details

CWMT-C Brickwork Channel Tie

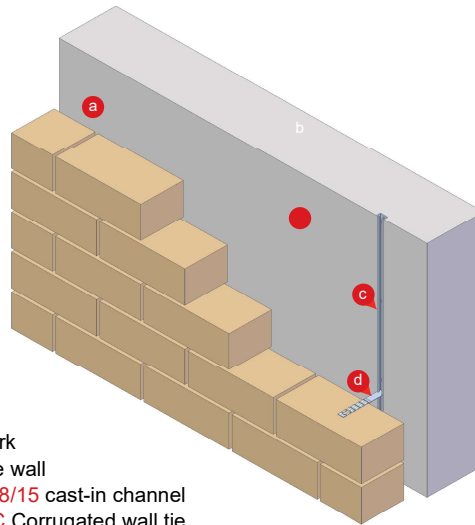


CWMT-D wall ties fixed on cast in channels



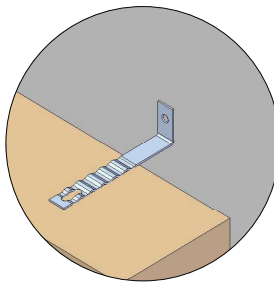
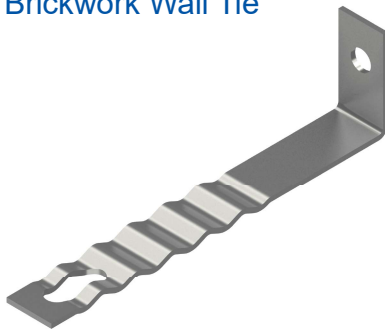
- Fixed on to 38/17 cast-in or surface fixed channels
- Positioning any where along the length of the channels
- Available in lengths between 75 and 250 mm
- Tensile loading is 1.0 kN

Product Code	Length
CMWT-C-75	75
CMWT-C-100	100
CMWT-C-125	125
CMWT-C-150	150
CMWT-C-200	200
CMWT-C-225	225
CMWT-C-250	250

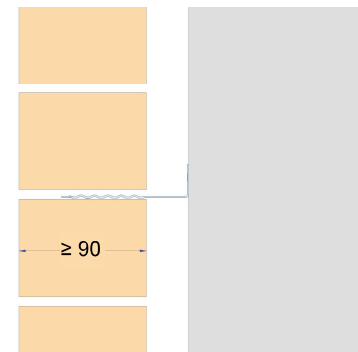


- a. Brick work
- b. Concrete wall
- c. HMPR-28/15 cast-in channel
- d. CWMT-C Corrugated wall tie

CWMT-B Brickwork Wall Tie

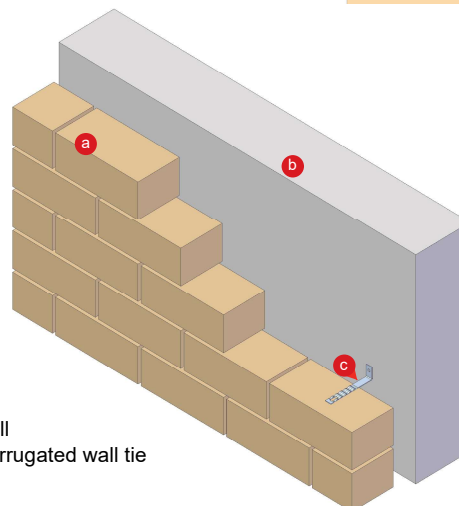


CWMT-B wall ties fixed on cast in channels



- Fixed on to concrete and brickwork walls with facade plugs
- Can be riveted or welded on to structural steel as well
- Available in lengths between 75 and 250 mm

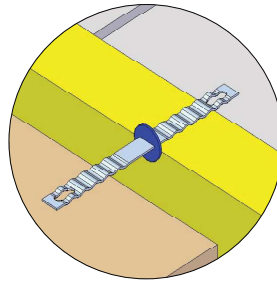
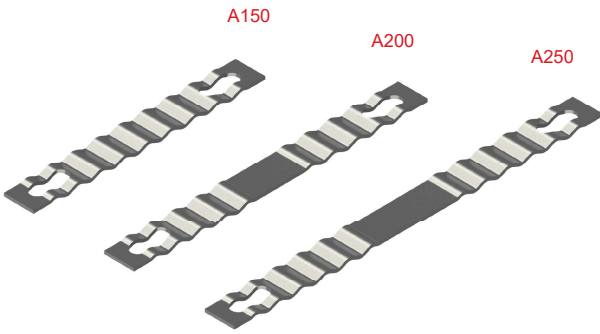
Product Code	Length
CMWT-B-75	75
CMWT-B-100	100
CMWT-B-125	125
CMWT-B-150	150
CMWT-B-200	200
CMWT-B-225	225
CMWT-B-250	250



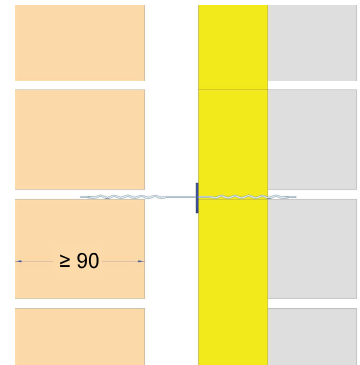
- a. Brick work
- b. Concrete wall
- c. CWMT-B Corrugated wall tie

CWMT Brickwork Corrugated Cavity Wall Ties

CWMT-A Brickwork Wall Tie



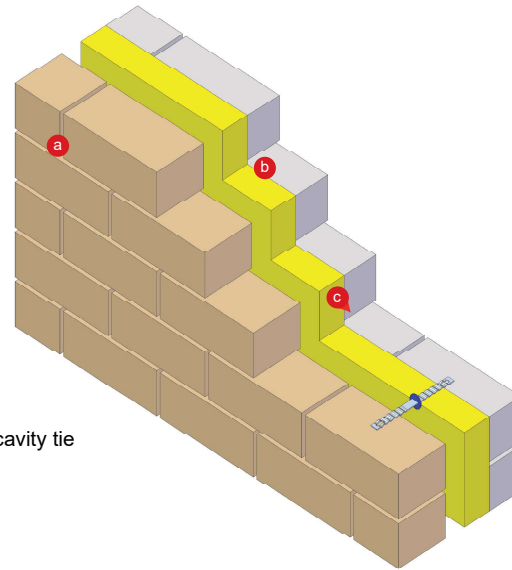
CWMT-A wall ties connected between inner and outer shell walls



- Fixed on to both inner and outer shell walls with mortar
- Quick and easy to install
- Available in 150 , 200 and 250 mm
- Can be supplied in stainless steel and galvanized steel

Product Code	Length
CMWT-A-150	150
CMWT-A-200	200
CMWT-A-250	250

- a. Brick work
b. Concrete wall
c. CWMT-A Corrugated cavity tie



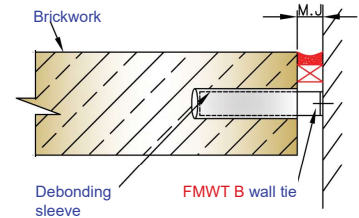
FMWT Brickwork Wall Ties For Expansion Joints

FMWT Brickwork Wall Ties For Expansion Joints

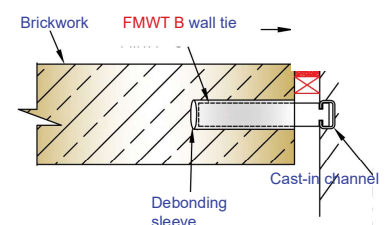
- Wall ties supplied with debonding sleeves
- Used on expansion joints where the debonding sleeves allow movement
- Available to fit the range of the CWMT wall ties



Product Code	Length
FMWT-B-125	125



Product Code	Length
FMWT-C-28-125	125
FMWT-C-38-125	125



Brickwork Product Code	Length
FMWT-A-225	225

