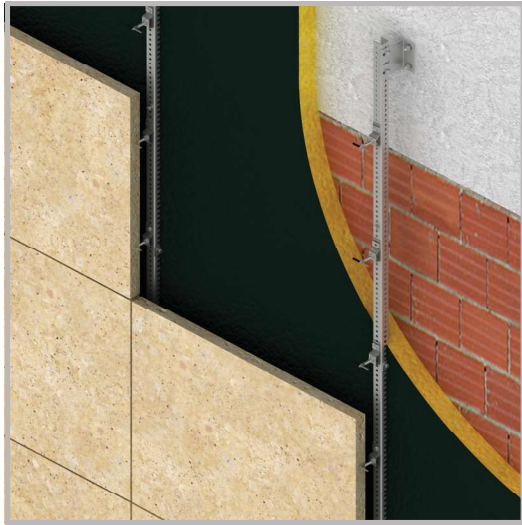


**HMPA-HC3 Sub Channel System - Introduction**



- Sub channel system with stainless steel or galvanized **HMPA U channels** and **HCSP3** supports
- Fast and easy installation
- Adjustability in all directions up to 30 mm
- Projection sizes minimum 80 mm maximum 250 mm
- **HZ02** Z anchors are fixed to channels with hex bolts and lock nuts
- Installation at horizontal & vertical joints

**HMPA U Channel**



**HCSP3 Channel Support**



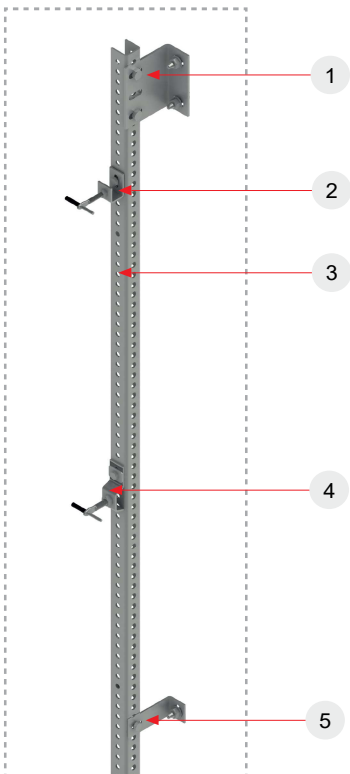
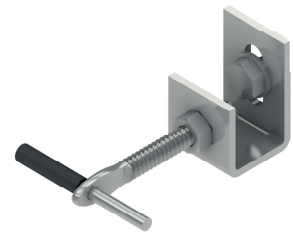
**HCRS3 Channel Restraint**



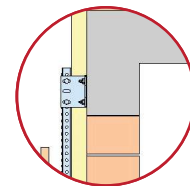
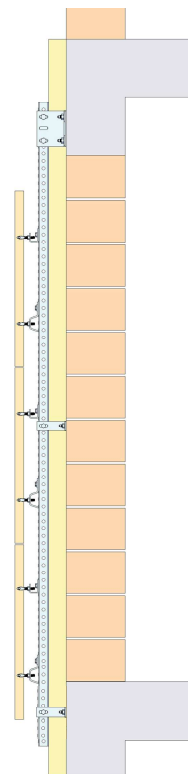
**HZ02 Z Anchor**



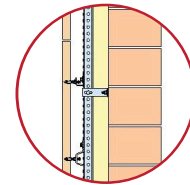
**HRS1 Restraint anchor**



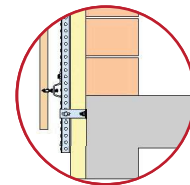
- ① Channel Support
- ② Restraint Anchor
- ③ U Channel
- ④ Z Anchor
- ⑤ Channel Restraint



**HMPA U Channels** supported on to load bearing concrete beams with **HCSP3** channel supports using anchor bolts



Stone installation is made with **HZ02 & HRS1** Anchors on to channels with hex bolts



Channels are tied on to walls with **HCRS3** Channel restraints to eliminate deflection