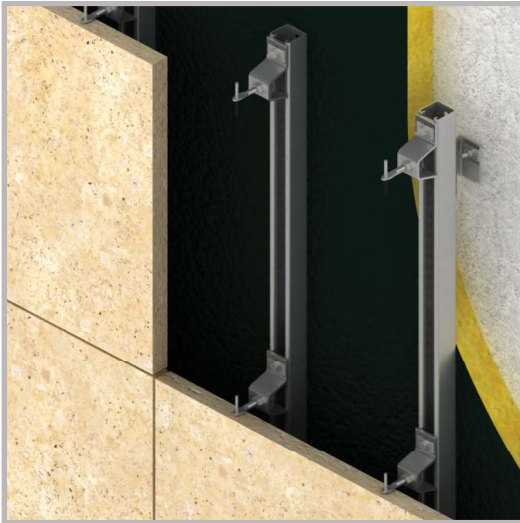


HMPB-HC1 Sub Channel System - Introduction



HMPB C Channel



HCSP1 Channel Support



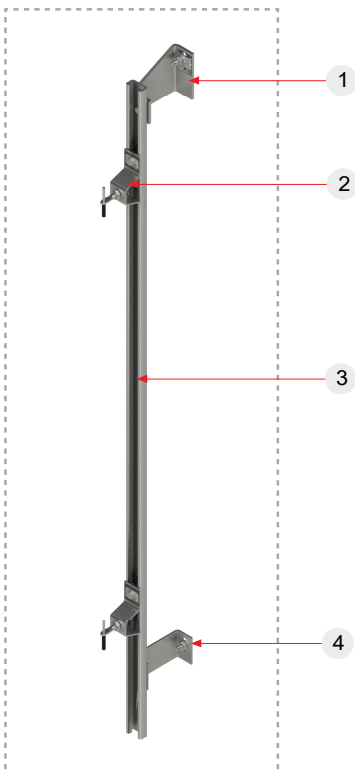
HCRS1 Channel Restraint



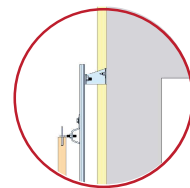
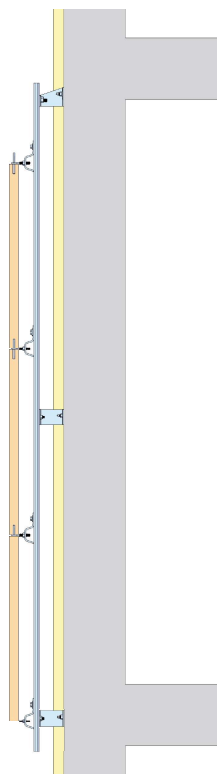
HZ02 Anchor



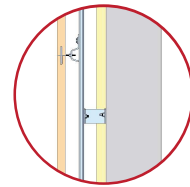
- Sub channel system with stainless steel or galvanized steel HMPB C channels and HCSP1 supports
- Easy to assemble channel system with no complicated set elements
- Projection sizes minimum 100 mm maximum 250 mm
- Ideal for facade restorations
- Stainless steel HZ02 Z Anchors are fixed to channels with hex bolts
- Installation in vertical and horizontal joints



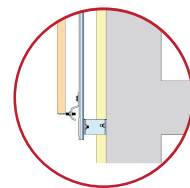
- ① Channel support
- ② HZ Z Anchor
- ③ C channel
- ④ Channel restraint



Channels supported on to load bearing beams with HCSP1 channel supports using expansion bolts



Stone installation is made with HZ02 Anchors on to channels with hex bolts



Channels are tied on to walls with HCRS1 Channel restraints to eliminate deflection