

FIX Brickwork Support Brackets - Introduction

FIX Brickwork support brackets are adjustable and secure brackets that are designed for the easy and quick installation of brick facing walls.

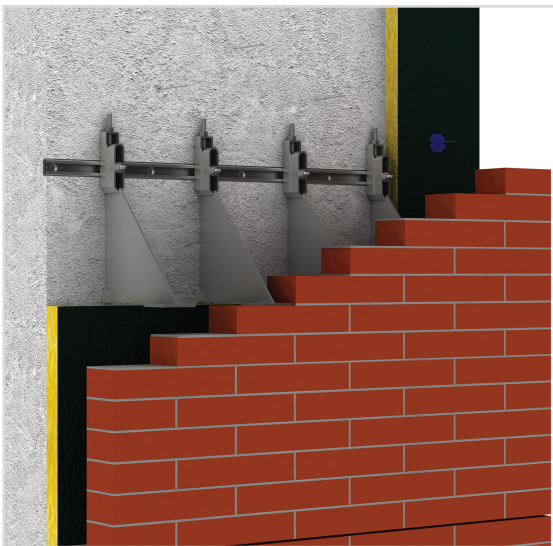
FIX support brackets are user friendly and are combined with a patented adjustable profile part that is assembled in the top of the bracket body. The brackets can be mounted by one single person. During the installation no loose parts fall down and the installer always has a hand free for adjusting.

When the FIX brickwork brackets are fixed on to walls, the vertical adjustability of the brackets is made by the set screw and nut. There is an adjustability space of 60 mm. The FIX brickwork anchors are installed either with expansion bolts or T head bolts into channels.

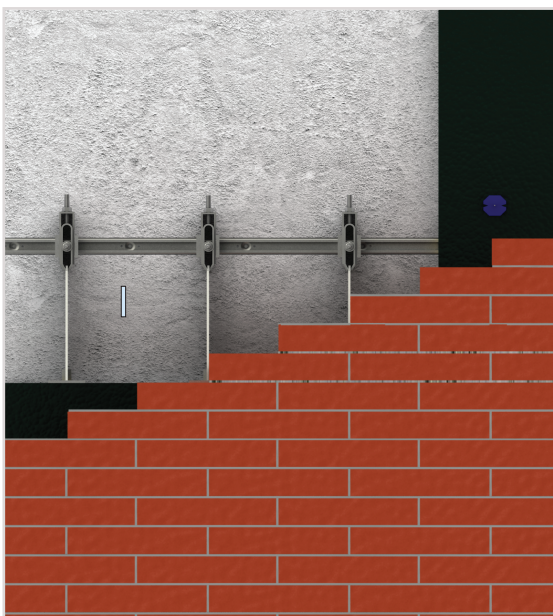
There are various type of FIX anchors that can be used for different applications.



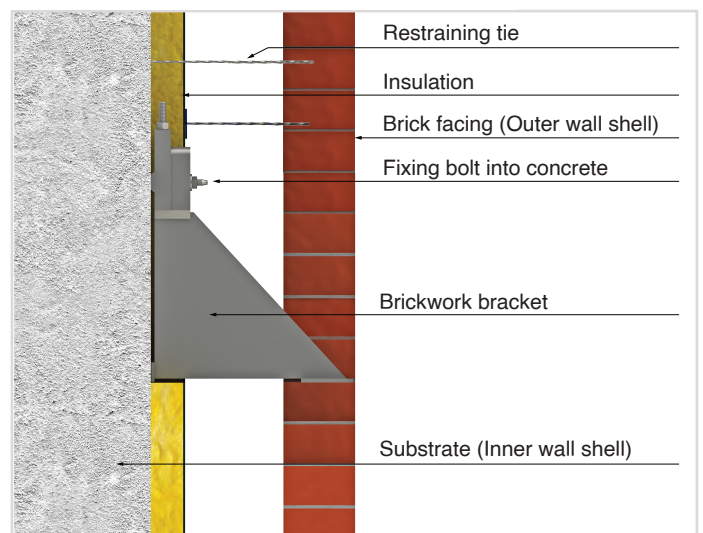
EN 845-1



• Perspective picture of brick facing installation with FIX-U brackets.



• Elevation picture of brick facing installation with FIX-U brackets



• Section picture of brick facing wall

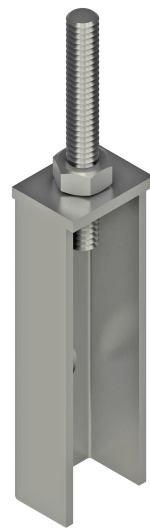
FIX Support Bracket - Introduction

The **FIX-AP** adjustable profile is a patented product that is used as a complementary product with the **FIX** brackets.

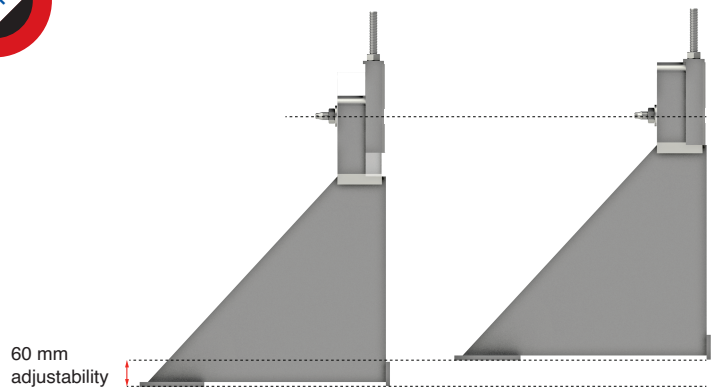
FIX-AP Adjustable Profile

The adjustable profile enables quick and secure adjustability in the vertical axis. Unlike the traditional set screw, using the adjustable profile offers the installer adjustment the brackets without the need for a second hand assistance.

The primary advantage of the adjustable profile is that it eliminates offset moment loads on the bolts, therefore the requirement for bending moment testing on bolts is not necessary.



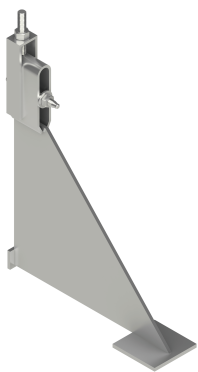
• Adjustability of the bracket is made by the adjustable profile and the threaded bar that is fixed on the profile with a nut. The bar is inserted in the tabbed hole on the upper part of the bracket.



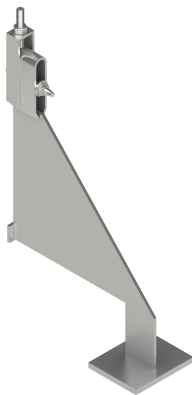
FIX Support Bracket - Execution Types

The **FIX** brackets are available for the complete range of the **FIX** Brickwork support brackets. The patented special adjustable profile is compatible with all the **FIX** type brackets. The adjustable profile and a threaded rod is used instead of a set screw and nut in order to regulate the vertical adjustment.

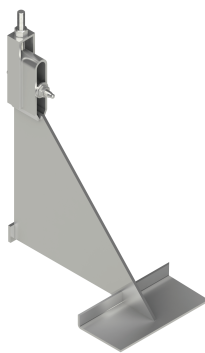
FIX-U



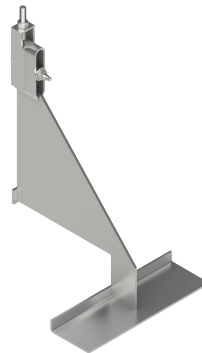
FIX-UV



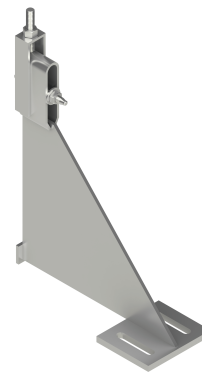
FIX-P



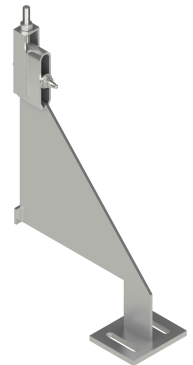
FIX-PV



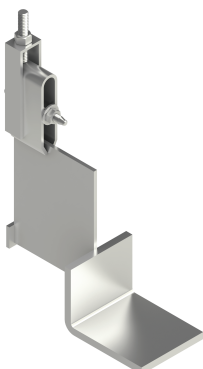
FIX-S



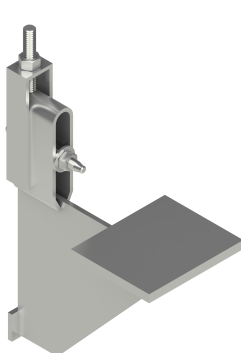
FIX-SV



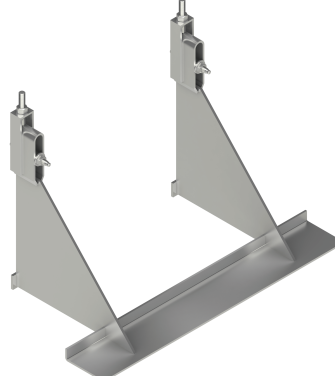
FIX-W



FIX-UT



FIX-F



FIX-FV

