

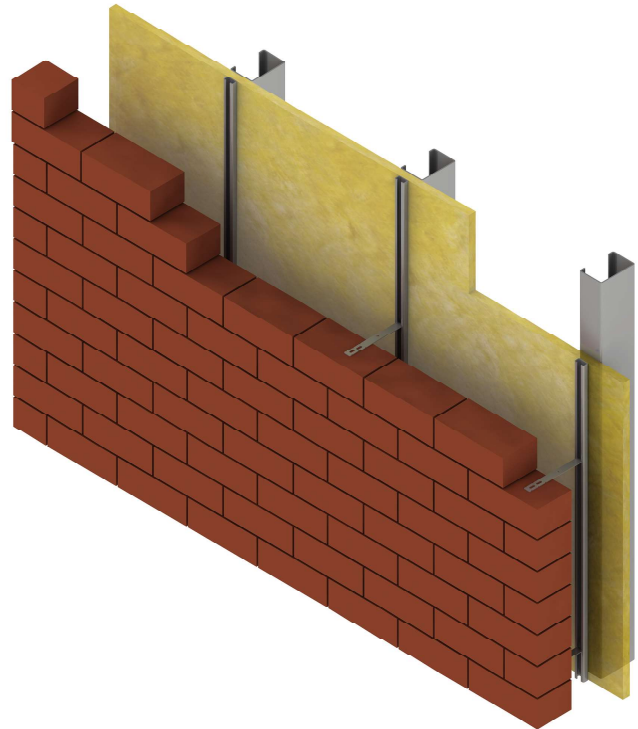
# HMP-25/14 Brick restraining system

Brickwork restraint channels type **HMP-25/14** and the corresponding channel ties type **HWT-D-25** are used to tie back the outer leaf brick cladding wall on to a building substrate. The substrate can be either concrete or steel stud.

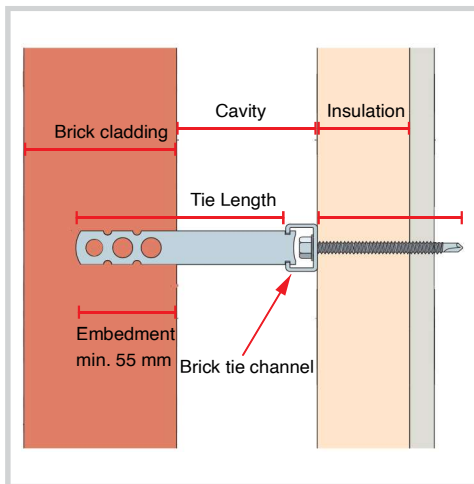
The attachment of the **HMP-25/14** brick tie channel is done with a suitable screw that drills through any type of insulation up to 220 mm thickness. The channels have pre-drilled holes with spacing of 100 mm. Self drilling screws to drill and tab into light gauge steel studs or concrete screws that drills to concrete are used for easy and fast attachments of the brick tie channel.

**HWT-D-25** channel ties are available to suit cavities up to 265 mm. The channel ties fit on to the channel by rotating 90 degrees and easily positioned in any location along the length of the channel.

Compression sleeves are supplied in instances where the restraint system has to be stiffened against high compression loads. The components can be supplied are stainless steel grade AISI 304 and AISI 316.



## HMP-25/14 & HWT-D-25 Installation



### System Components:

- HMP-25/14 Channel in 2700 mm and 3000 mm as standard lengths.
- Threaded fixing screws available for light gauge steel and concrete. Screws can drill through insulation up to 220 mm thick.
- HWT-D-25 channel ties in different length to accommodate up to 259 mm open cavity.
- Compression sleeves supplied to correspond with the insulation thickness for enabling stability of the restraint system under compression load.
- All components are stainless steel grade AISI 304 - 1.4301 & AISI 316 - 1.4401

## Wall Tie Types as per reference to PD 6697 and BS EN 1991-1-4

Required wall tie type	Application	Building height (m)	Geographical Location
Type 1	Heavy duty tie, suitable for most building types	Any height	Suitable for most sites. However, for relatively small or unusually shaped buildings in vulnerable areas, tie provision should be calculated
Type 2	General purpose tie, suitable for residential and small commercial buildings	15	Suitable for flat sites where basic wind speed is up to 31m/s and altitude is not more than 150m above sea level
Type 3	Basic wall ties, suitable for residential and small commercial buildings	15	Suitable for flat sites in towns/cities where basic wind speed does not exceed 27m/s and altitude is not more than 150m above sea level
Type 4	Light duty tie, suitable for box-form domestic dwellings	10	Suitable for flat sites in towns/cities where basic wind speed does not exceed 27m/s and altitude is not more than 150m above sea level

Notes: Refer to PD 6697: 2010 and BS EN 1991-1-4: 2005 for complete information.

## HMP-25/14 Restriant System Performance Details

Insulation thickness (mm)	Vertical Tie Spacing (mm)	Spacing of the Fixings (mm)	Wind Load Capacity (kN/m <sup>2</sup> )
Max. 220	300	400	3.31
Max. 220	375	400	2.65
Max. 220	450	400	2.21
Max. 220	675	400	1.58

Notes: Centres shown achieve equivalent tie type performances to PD 6697 6.2.2.5