



Case Study – Grand Algiers Mosque

Project:

Grand Algiers Mosque

Location:

Algiers, Algeria

Contact:

China State Construction & Engineering Co

Architect:

KSP Jürgen Engel Architects

Consultant:

CMC Algiers

Area of Installation:

140.000 sqm travertine

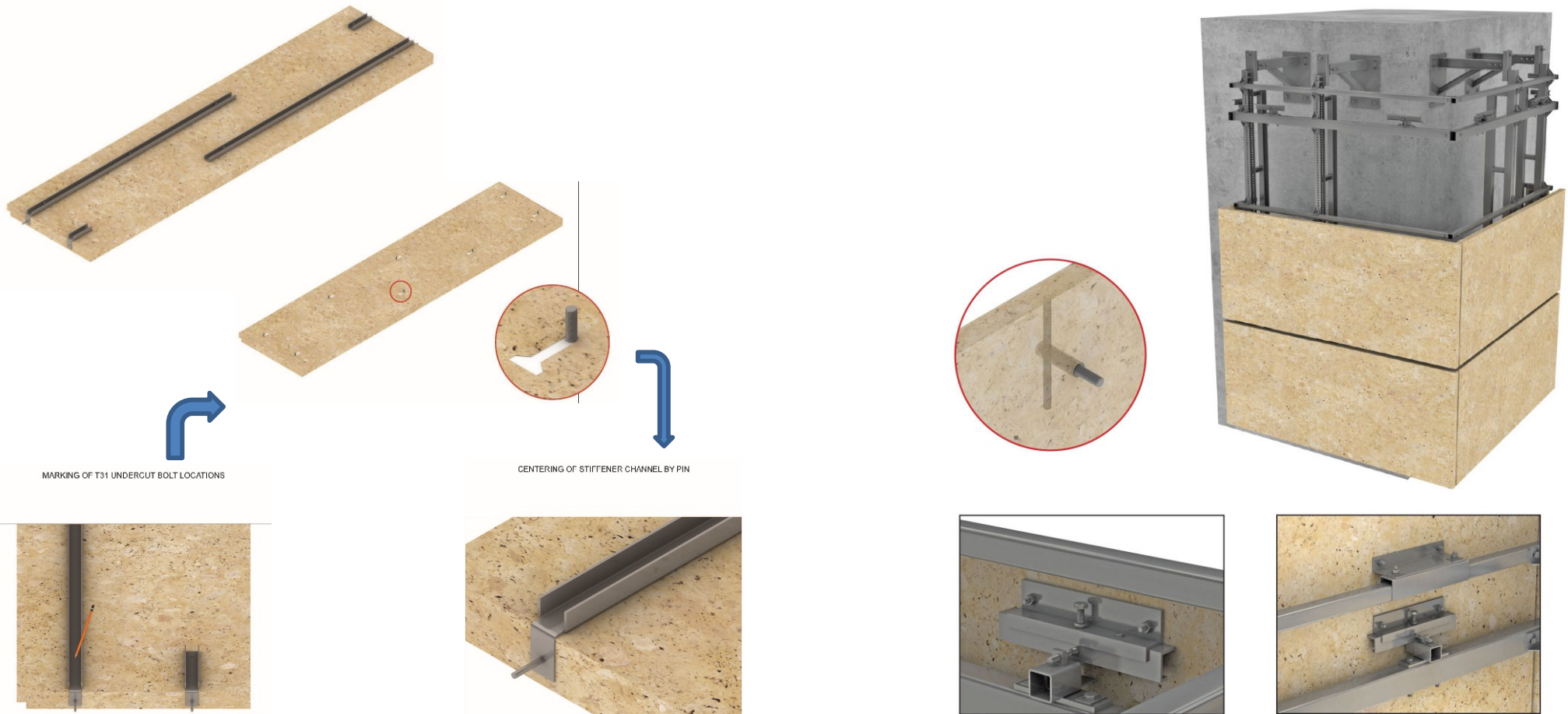


Case Study – Grand Algiers Mosque

Project Unique Constraints

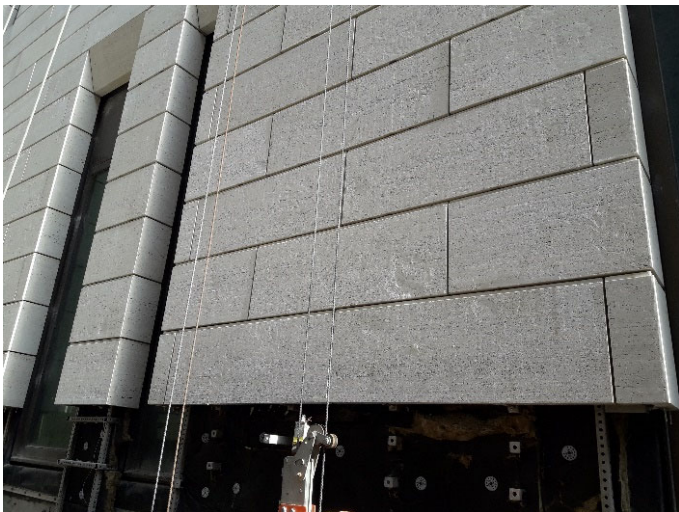
The specified material is Travertine – relatively brittle and cannot withstand bending stresses. Panel size 50 x 190 cm

- Under the load (wind load suction reaching 2541 N/m²) the specified material would surely fail
- HAZ designed a **reinforcement system** (stiffeners) for the stone panel itself, to overcome the limitation of the specified material





Case Study – Grand Algiers Mosque



Case Study – Grand Algiers Mosque

